



Frozen Jr Audition Pack 2024

Audition pack for Elsa

Young Elsa, Middle Elsa, and Elsa are all the elder Princess of Arendelle at different ages. Next in line for the throne, Elsa has been born with magical powers that can overwhelm her when she becomes afraid and harm others if not handled with care. Fearful of hurting anyone, especially her beloved sister, Anna, Elsa becomes anxious and withdrawn as she grows older, before eventually learning to take control of, and become confident in, her powers which she masterfully uses to manipulate the Snow Chorus.

Vocal Range
F#3 - D5

Firstly, thank you for the interest in being part of our production of Frozen Jr.

The venues:

Rehearsals are at Victory Church, Rugeley. WS15 2BG

The venue for the production is The Rugeley Rose Theatre, Taylors Lane WS15

KEY DATES:

Wednesday 16th July 2025 - Dress and Tech Rehearsal

Cast Arrive at 6pm, finish at 8:30pm

Thursday 17th July 2025 - First Tech and Dress Rehearsal

Cast Arrive at 6pm, finish at 8:30pm

Friday 18th July 2025 - Dress and Tech Rehearsal

Cast Arrive at 6pm, finish at 8:30pm

Saturday 19th July 2025 - Matinee Performance

Cast Arrive at 1pm, doors open at 2:30pm, show commences at 3:00pm

Saturday 19th July 2025- Evening Performance

Cast Arrive at 5:30pm, doors open at 6:30pm, show commences at 7:00pm

Sunday 20th July 2025- Matinee Performance

Cast Arrive at 1pm, doors open at 2:30pm, show commences at 3:00pm

Fees: Membership fees do apply. Rehearsals are £7.50 each, this covers the hire of rehearsal and performance venue, staffing, props and set, and a selection of costumes. We may ask for your support with sourcing some costumes. There is a £15 show week fee which covers all rehearsals and shows during that week.

You can contact the production team at any time via the Contact Us form on the website, or by emailing thespianartsmembers@gmail.com. Resources can also be accessed via the website - ask us how.

Our expectations

We expect the cast to be dedicated to the production, and as such to be able to meet the expectations below:

- ★ **Attendance:** Members are expected to attend all rehearsals they are scheduled for. If you are unable to make a week, that is fine, but we need at least 2 hours notice if you aren't able to attend, otherwise the session fee will still need to be paid. Frequent failure to give notice can result in dismissal from the show, as it will hinder our progress and disrupt the plans. You will receive a rehearsal schedule every month. Some weeks your child may not be required, or they may only be needed for an hour. It's important you take note of this. Regardless of session length, if they attend, it is £7.50.
- ★ **Rehearsals:** Students should bring their scripts, a pencil, and a drink, they should also wear appropriate shoes and clothes for movement. They also need to wear their Thespian Arts T-Shirt for every session to abide by our uniform policy.
- ★ **Homework:** Students will have some homework for the show, including memorising lines and actions, researching their character, etc. Work with your child to help them perform their best!
- ★ **Attitude:** The rehearsal room and theatre are safe spaces where young people can take positive risks and be themselves without the fear of being laughed at or alienated. This principle is essential to artistic growth and exploration. Participants are expected to respect these ideas and are encouraged to remember it themselves when trying new things.
- ★ **Volunteering:** If you want to volunteer additional time or resources to the production, simply drop us a message, and we will contact you when assistance is needed. We are still in the process of compiling a list of everything that needs to be done, but don't worry, when we have tasks that need to be done, we will let you know.

Finally, please remember that a play is a living, breathing entity. Things don't always go exactly as planned, so changes to the plan will most likely be made throughout the rehearsal process. We promise to give you as much advance notice as possible on all changes that arise.

AUDITION TIPS:

Acting auditions - Think about your body language and tone of voice when delivering the lines. If you learn the script off by heart you'll be able to use your hands and your body fully. Go out of your comfort zone and think about what your character would be feeling. You can use the script in your audition but you will perform better if you don't need it!

Singing auditions - When singing, think about what emotions your character would be feeling in the moment and rehearse to both the vocal track, and the instrumental. You will be asked to sing to the instrumental in your audition, so we can clearly hear your voice.

ACTING AUDITION:

ELSA

May I speak with you alone please, Anna?

ANNA

No. Whatever you have to say, you can say to both of us.

ELSA

All right. You can't marry a man you just met.

ANNA

You can if it's true love.

ELSA

What do you know about true love?

ANNA

What do you know about me?

ELSA

(rattled)

You asked me for my blessing, but my answer is no.

SINGING AUDITION:

Let It Go

1 7 ELSA:



The

9



snow glows white on the moun-tain to-night, not a

11



foot - print _____ to be seen. _____ A

13



king-dom of i - so - la - tion, and it

15



looks like _____ I'm the queen. _____

17



The wind _ is howl - ing like _ this swirl -

19



- ing storm__ in - side.___

21



Could-n't keep it in, heav-en knows I_____ tried...

(The SNOW CHORUS enters, one by one.

Their moves are beautiful, fluid.)

24



Don't let__ them in,__

26



__ don't let__ them see, be the good girl you

28



al-ways have__ to be. Con-ceal.__ Don't feel.

30



__ Don't let__ them know.____

32



__ Well, now__ they know.____

34



__ Let it go,____ let it go,____ can't

37



hold it back an - y - more.____ Let it go,

39



__ let it go.____ Turn a-way__ and slam__ the__

42



door.____ I__ don't__ care____ what they're

45



go-ing to____ say.____ Let the storm rage__ on.

48

— The cold nev-er both-ered me an - y - way.

*(The SNOW CHORUS
swirls around ELSA.)*

51

2 **ELSA,
SNOW CHORUS:**

It's fun - ny how some dis -

54

- tance — makes ev - 'ry-thing — seem small

56

ELSA:

— and the fears that once — con - trolled

58

— me can't get to me — at all. —

61

It's time — to see — what I — can do,

**ELSA,
SNOW CHORUS:**

63

to test — the lim - its and — break through.

65 **ELSA:**

No right, — no wrong, — no rules — for me.

*(More SNOW CHORUS enter,
their movements picking up
synchronized speed and energy.)*

67 **ELSA,
SNOW CHORUS:**

— I'm free! — Let it go!

70 **ELSA:**

— Let it go! — I am one

72 **ELSA,
SNOW CHORUS:**

— with the wind — and sky. — Let it go!

74 **ELSA:**

— Let it go! — You'll ne -

76

- ver see — me — cry. —

78



Here — I — stand, — and here — I'll — stay.

**ELSA,
SNOW CHORUS:**

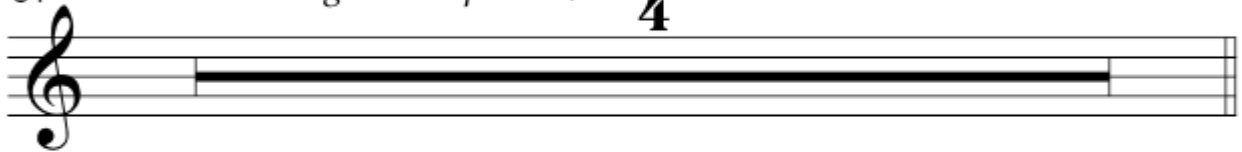
81



— Let the storm rage — on... —

*(The SNOW CHORUS begins to surround ELSA,
creating her ice palace.)*

84



88

ELSA:



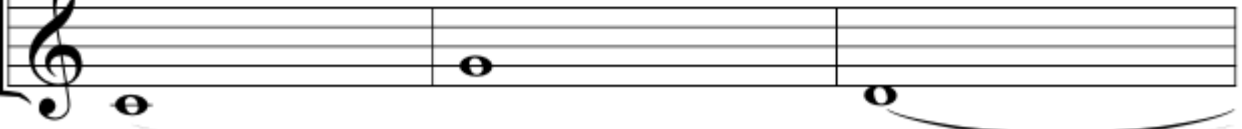
My pow - er flur - ries through the air — in - to — the ground.

GROUP 1:



Ah —

GROUP 2:



Ah —

91

My soul is spiraling in fro-

Ah

Ah

Detailed description: This block contains three staves of music for measures 91-93. The top staff is a vocal line in treble clef with lyrics 'My soul is spiraling in fro-'. The middle and bottom staves are piano accompaniment, each featuring a long, sustained note with a slur and a fermata, labeled 'Ah'.

94

- zen frac - tals all a-round. And one thought crys-

Ah

Ah

Detailed description: This block contains three staves of music for measures 94-95. The top staff is a vocal line with lyrics '- zen frac - tals all a-round. And one thought crys-'. The middle and bottom staves are piano accompaniment, each featuring a long, sustained note with a slur and a fermata, labeled 'Ah'. A key signature change to two sharps (D major) is indicated at the start of measure 95.

97

- tal-liz - es like__ an i - cy blast:___

100

(ELSA):

I'm nev - er go - ing back, the

SNOW CHORUS:

The

*(The mighty ice palace is complete.
ELSA stands in the middle, finally free.)*

102

past is in___ the past!___

past is in___ the past!___

104

— Let it go! — Let it go! — And I'll rise

— Let it go! — Let it go! — And I'll rise

107

— like the break of dawn. — Let it go! — Let it go!

— like the break of dawn. — Let it go! — Let it go!

110

— That per - fect girl — is — gone. —

— That per - fect girl — is — gone. —

113 (ELSA):

Here — I — stand — in the

115



light ___ of ___ day. _____

117

(ELSA):



___ Let the storm rage ___ on! _____

SNOW CHORUS:

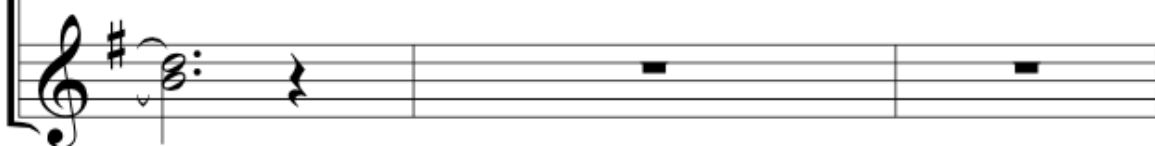


Let the storm rage ___ on! _____

120



___ The cold nev-er both-ered me a - ny-way! _____



123





Oh _____ Ah!